



The "Florida Plan"

Building great pathways to great careers

Marilyn Barger, Ph.D., P.E., CPT
Executive Director and P.I.
barger@fl-ate.org
www.fl-ate.org



FLATE

Florida's Advanced Technological Education Center of Excellence



Impact Florida. Lead Nationally.



National Science Foundation Advanced Technological Education



Partners with Industry for a new American Workforce



Impact Florida. Lead Nationally.



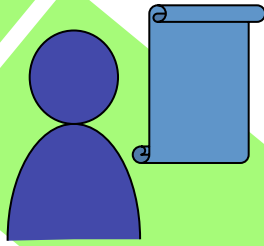
VISION

FLATE will be Florida's leading resource for education and training expertise, leadership, projects, and services to promote and support the workforce in the high performance production and manufacturing community.

Impact locally. Lead nationally.



Impact Florida. Lead Nationally.



State DOE

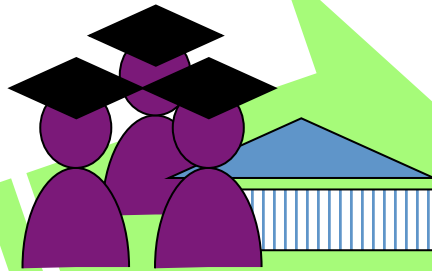


Workforce Agencies

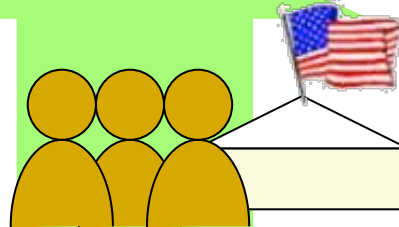


External Benchmarks

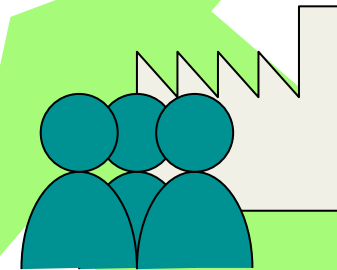
Florida's
 Plan for a Unified
 Technical Education
 System



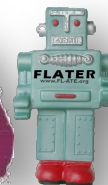
State Colleges Academic & Workforce Programs



School Districts



Manufacturers Industry



Impact Florida. Lead Nationally.



Florida's A.S. Engineering Technology Degree

60 semester hours

I. General Education – 15 - 18 credit hours

II. ET Core - 18 credit hours

III.10 Specialization Tracts – 24 to 27 credit hours

Florida's A.S. Engineering Technology Degree

60 semester hours

I. General Education – 15 - 18 credit hours

English Science
Math Social Science
Humanities

II. ET Core - 18 credit hours

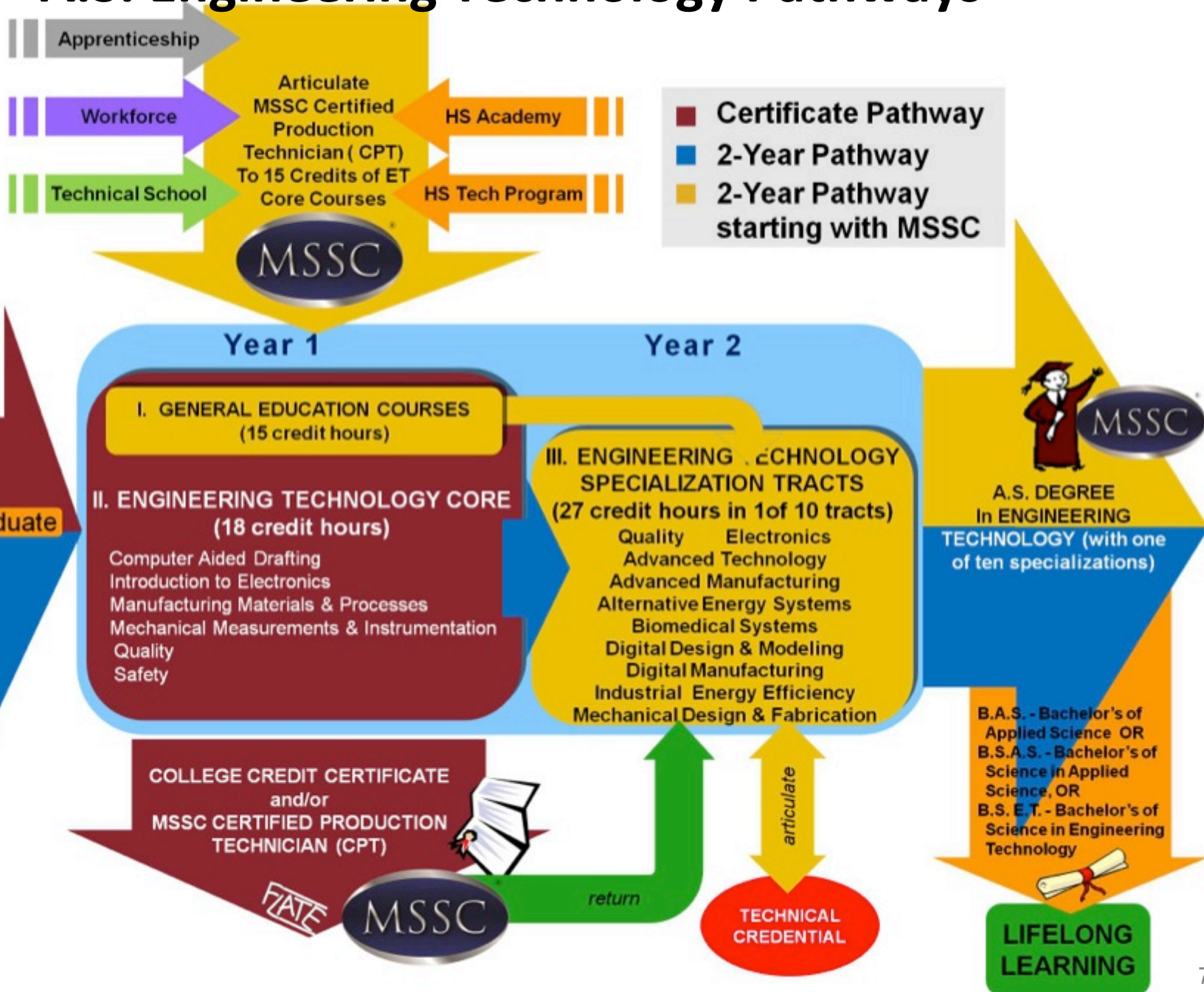
Computer Aided Design Electronics
Manufacturing Processes & Materials Quality
Mechanics & Instrumentation Safety



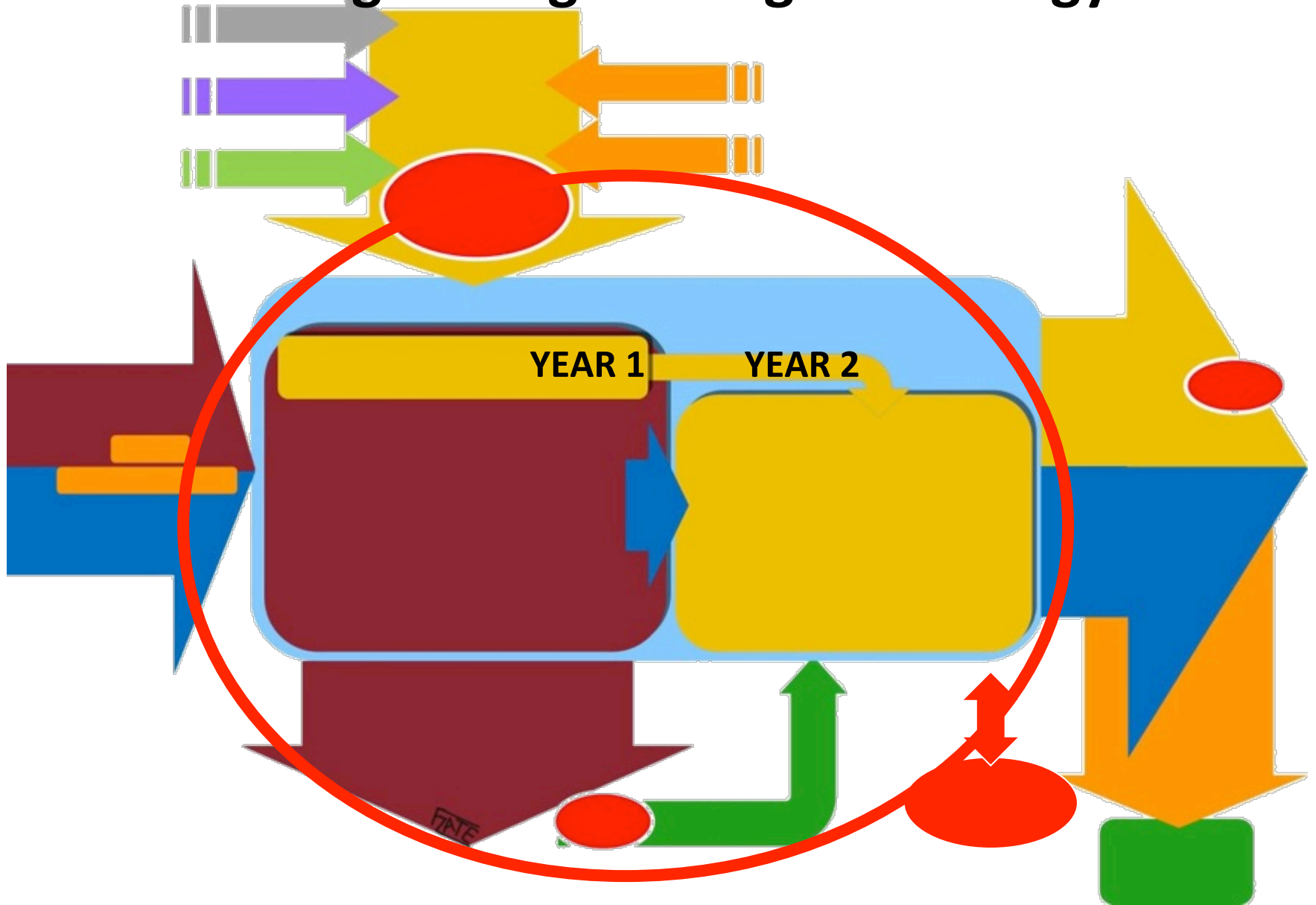
III. 10 Specialization Tracts – 24 to 27 credit hours

Advanced Manufacturing	Advanced Technology
Biomedical Systems	Digital Design & Modeling
Electronics	Mechanical Design & Fabrication
Quality	Alternative Energy Systems
Digital Manufacturing	Industrial Energy Efficiency

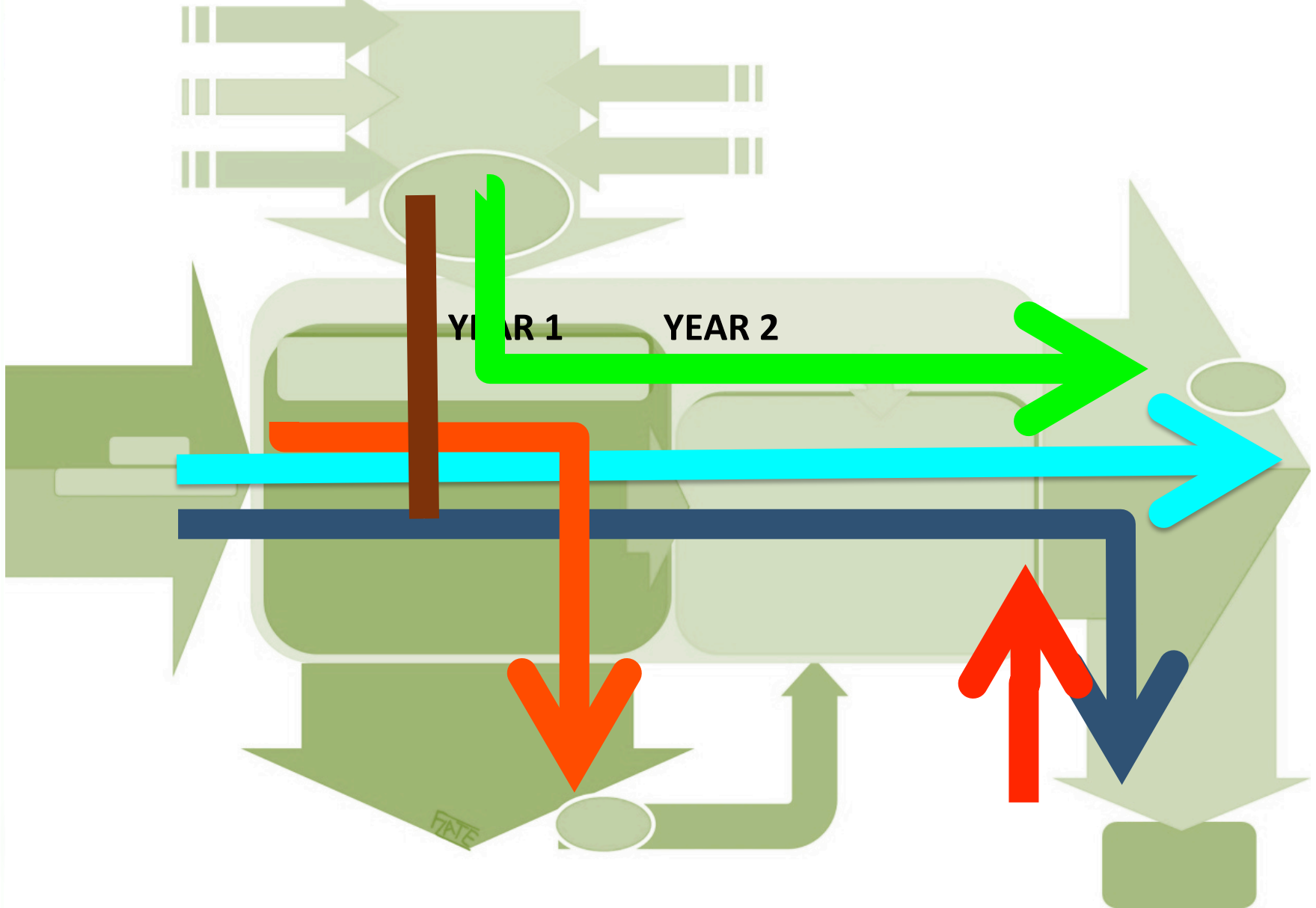
A.S. Engineering Technology Pathways

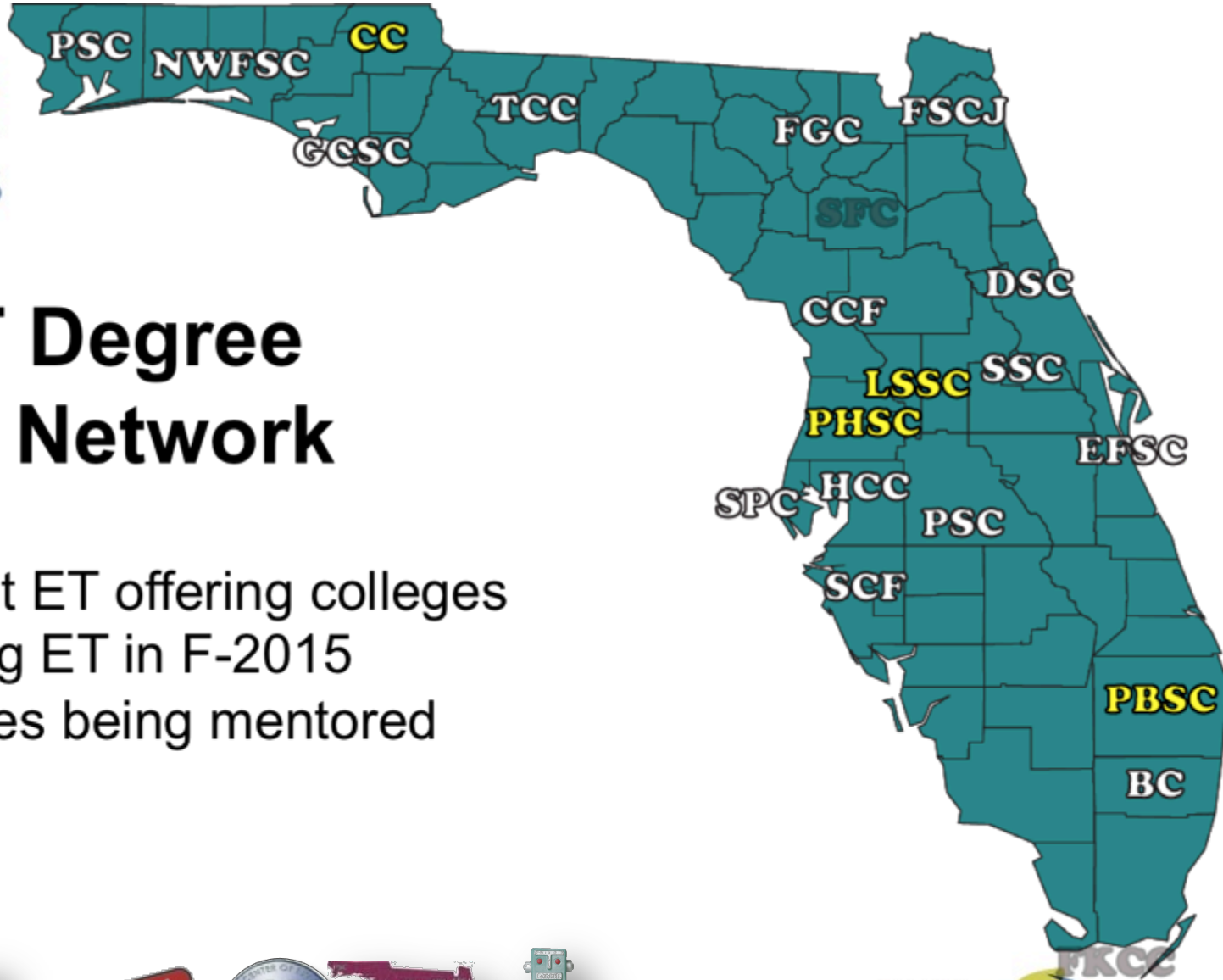


A.S. Degree Engineering Technology



A.S. Engineering Technology Pathways





2015 ET Degree College Network

- current ET offering colleges
- starting ET in F-2015
- colleges being mentored

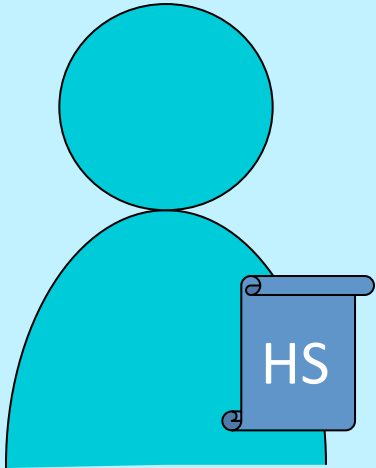


Impact Florida. Lead Nationally.



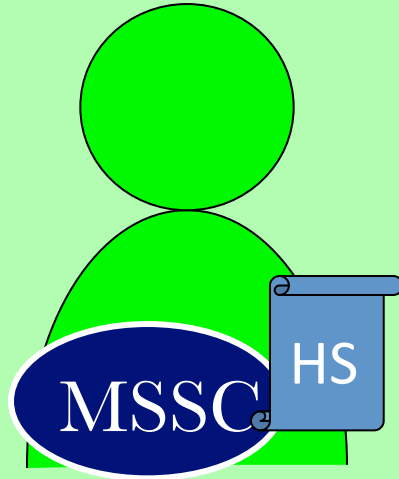
A.S. Engineering Technology Pathways

HS Grad / GED with
no Technical
Program - *wants*
AS/AAS Degree



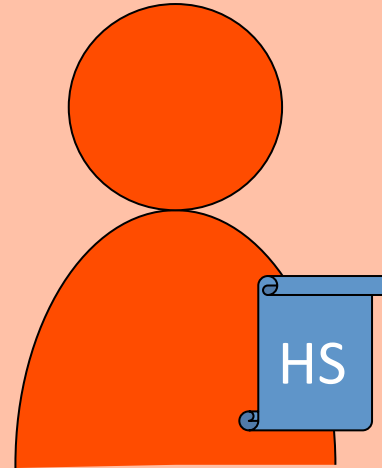
*AS Degree (and
optional certificates)*

HS Grad / GED with
MSSC Certification (from
HS or work experience)



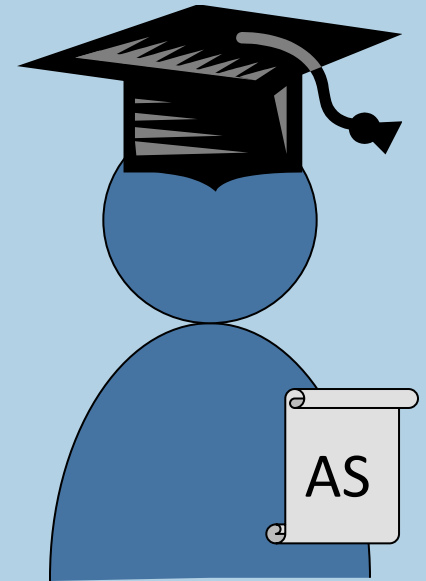
*AS Degree & MSSC CPT
(and optional
certificates)*

HS Grad / GED
without Technical
Program

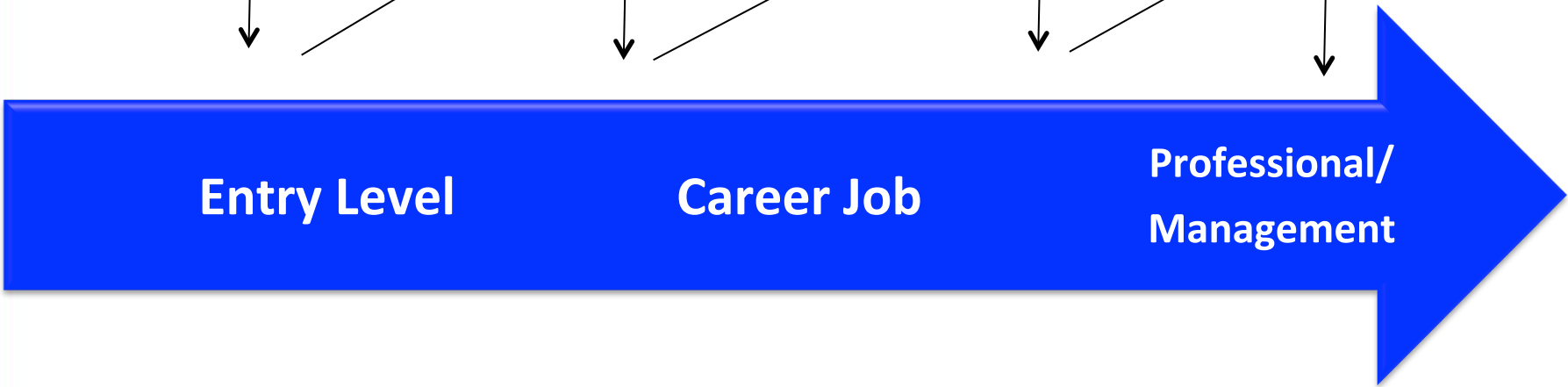
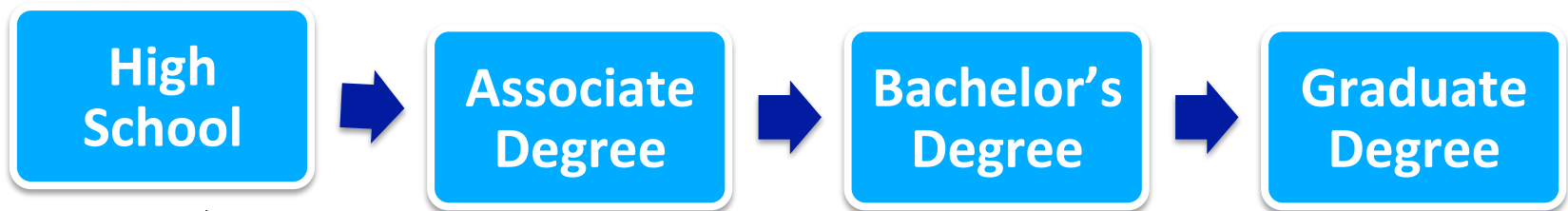


*College Certificate &
MSSC CPT*

AS ET Graduate

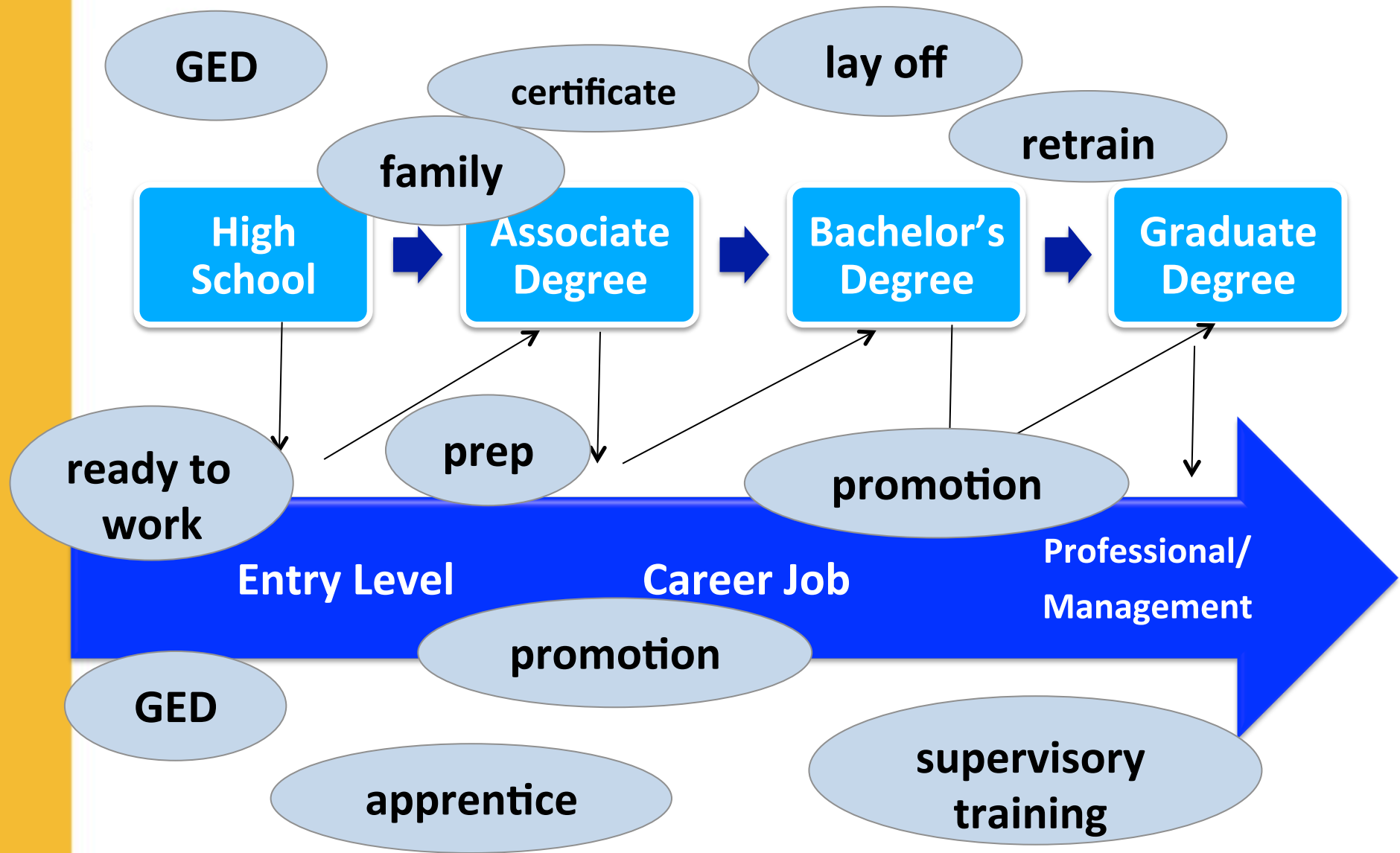


*BS Applied Science or
BS Eng Tech*



Impact Florida. Lead Nationally.

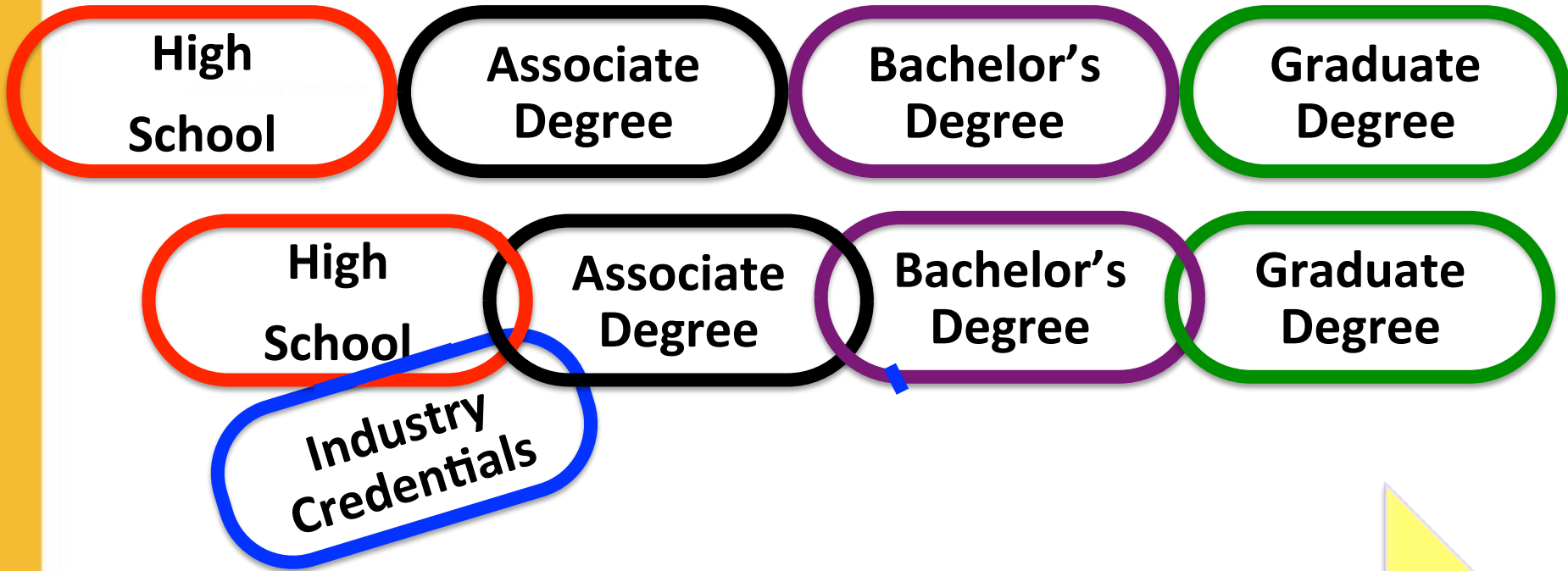




Impact Florida. Lead Nationally.



Ideal Pathways



Entry Level

Career/Job

**Professional/
Management**



Impact Florida. Lead Nationally.



FLATE's Engineering Technology Network

Made in FLORIDA | Industry | Careers

Why Manufacturing | E.I. Degree | Student Profiles | Salary Information | Company Profiles

Engineering Technology Education

At a Community College near you!

Good jobs, great pay, bright future

The Engineering Technology (ET) degree program is a cohesive, comprehensive degree program developed by the Florida Department of Education (FDOE) with the support of the Florida State Board of Technical Education (FSBTE). The program focuses on a set of core classes that cover introductory electronics, instrumentation and testing, processes and assembly, and safety. These core skills align with the national Manufacturing Skill Standards Council (MSSC) Portable Production Technician Certification. The ET Core coupled with a degree specialization prepares students for many jobs in manufacturing and other high-technology industries.

A valid MSSC CPT credential articulates to 15 credit hours of the ET degree at any of colleges offering the degree in the state. The MSSC CPT is an integral component of the National Association of Manufacturers (NAM) Endorsed Certification System (SCS). This SCS system aligns industry validated academic programs and occupations supporting all manufacturing sectors.

[View school location map](#)

Community colleges currently offering the degree include:

Click on the logos below to view program information



FORUM

on Engineering Technology



Impact Florida. Lead Nationally.



[Industry](#)

[Careers](#)

[Students](#)

[Educators](#)

[Contact Us](#)

[Why Manufacturing](#)

[E.T. Degree](#)

[Student Profiles](#)

[Salary Information](#)

[Company Profiles](#)

[News & Events](#)

[Videos](#)

[Camps & Workshops](#)



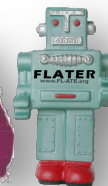
VIDEOS



a product of



Do you know what's *Made in Florida*?

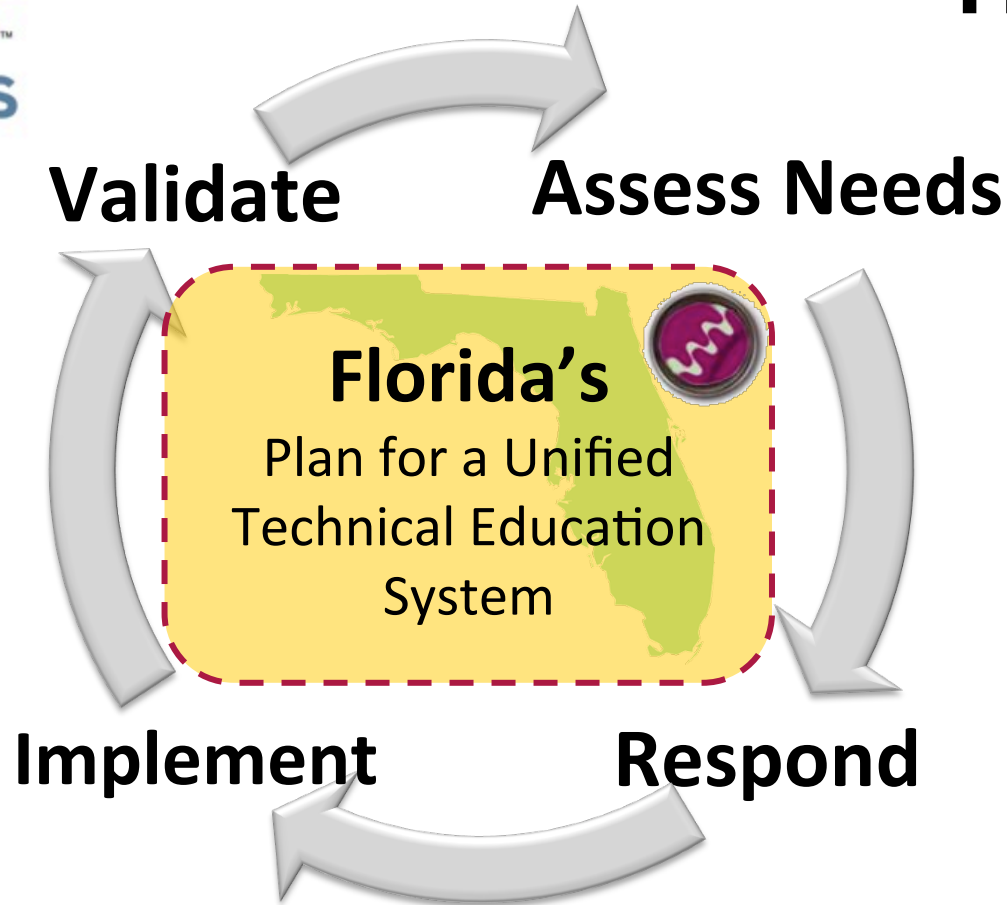


Impact Florida. Lead Nationally.





FLATE's Role



Implementing the Florida Plan for Technician Education
support Florida's manufacturing workforce needs



**MFG
DAY™**

10.02.15

**in
FLORIDA!**

FLATE is working with partners around the state to make a big, statewide splash on Manufacturing Day in FL – we hope you can join us this year.

www.mfgday.com



Impact Florida. Lead Nationally.



Thank you!

Marilyn Barger, Ph.D., P.E., CPT
Executive Director and P.I.
barger@fl-ate.org



www.fl-ate.org

www.madeinflorida.com

www.flate.pbwiki.com



19



Impact Florida. Lead Nationally.

produced by
sme